

Global Short Maturity Sustainable High Yield Fund

November 30, 2021

Class B Capitalization EUR Hedged

SKY HARBOR

GLOBAL FUNDS

Responsible Investing for a Sustainable Future

Investment Objective

Global ESG socially responsible active investment strategy seeking to generate favorable risk-adjusted returns through current income by diversified investment in US and non-US dollar high yield corporate bonds with average expected maturity of five years or less.

Prospectus and KIIDs available free of charge at www.skyharborglobalfunds.com

Benchmark

Active strategy not managed in reference to a benchmark index

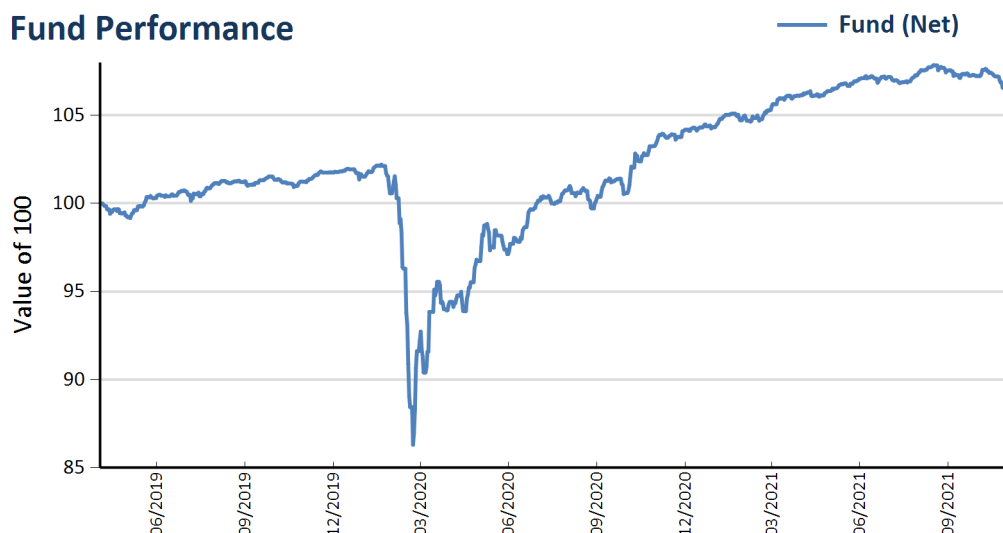
Portfolio Management Group

Lead PM: David Kinsley, CFA
Mike Salice, CFA
Ryan Carrington, CFA

Fund Facts

ISIN	LU1841489948
Bloomberg ID	SKYSMBE LX
Fund Inception	Dec 27, 2018
Share Inception (SI)	May 03, 2019
Fund Currency	USD
Share Currency	EUR
Fund AUM	\$83.5 mn
NAV	106.7
Min. Initial Inv.	\$1 mn
Mgmt Fee (p.a.)	75 bps
TER	75 bps
Order Cut-off	12:00 CET
Settlement	T+3
Dealing Freq.	Daily
Valuation Freq.	Daily
Swing Pricing	None

Fund Performance



Performance (%)	1 Mth	3 Mths	YTD	1 Yr	3 Yrs	5 Yrs	SI
Fund (Net)	-0.49	-0.68	2.42	3.29			2.55
HY Market†	-1.15	-2.40	0.81	2.56			3.13

Calendar Year (%)	2019*	2020	2021*
Fund (Net)	1.76	2.38	2.42
HY Market†	2.97	4.29	0.81

* partial year

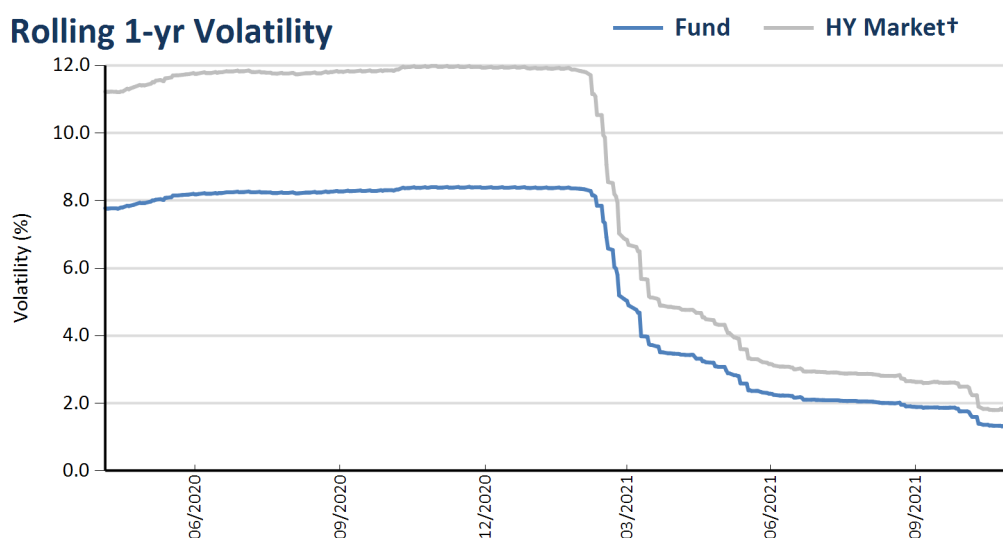
† The Fund is not managed to any specific benchmark. The High Yield Market statistics shown are from the ICE BofA US High Yield Index 100% EUR hedged prior to Nov 30, 2020 and the ICE BofA Global High Yield Index 100% EUR hedged after Nov 30, 2020 and are provided here solely for information & marketing purposes. Comparisons could also be made to other benchmarks

Risk Measures

Volatility (%)	1 Yr	3 Yrs	SI	Tracking Error (%)	1 Yr	3 Yrs	SI
Fund	1.36		5.33	Fund	0.97		2.82
HY Market†	1.91		7.66	HY Market†			N/A

Sharpe Ratio	1 Yr	3 Yrs	SI	Max Drawdown (%)	1 Yr	3 Yrs	SI
Fund	3.00		0.62	Fund	1.19		15.55
HY Market†	1.75		0.51	HY Market†	2.73		22.16

Rolling 1-yr Volatility



Global Short Maturity Sustainable High Yield Fund

November 30, 2021

Class B Capitalization EUR Hedged

SKY HARBOR

GLOBAL FUNDS

Responsible Investing for a Sustainable Future

Top 10 Holdings by Issuer Weight

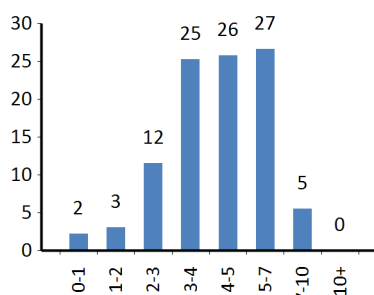
Name	Ratings	Sector	Weight (%)
BWAY HOLDING CO	CCC1	Capital Goods	2.20
MEREDITH CORPORATION	CCC1	Media	1.82
DISH DBS CORP	B3	Media	1.77
TENNECO INC	B3	Automotive	1.59
REALOGY GROUP LLC / REALOGY CO	B1	Real Estate	1.54
AMERICAN AIRLINES INC	B1	Transportation	1.46
TOWNSQUARE MEDIA INC	B2	Media	1.33
ADVANCED DRAINAGE SYSTEMS INC	BB3	Basic Industry	1.32
ENTERCOM MEDIA CORP	B3	Media	1.30
FORD MOTOR CO	BB1	Automotive	1.30

Fund Information

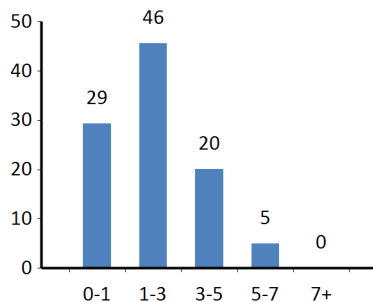
	SHGF*	HY Market†
Market Value (mn/bn)	\$83.50	\$2,730.06
Average Credit Rating	B2	BB3
Average Coupon (%)	6.71	5.37
Yld to Wrst (%) (USD/EUR)	4.75/3.04	5.47/3.76
Yld to Mat (%) (USD/EUR)	5.61/3.89	5.76/4.05
Current Yld (%) (USD/EUR)	6.61/4.90	5.74/4.03
Average Maturity (yrs)	4.37	6.02
Avg Mod. Dur. to Worst	2.13	4.02
Average Price	104.08	99.75
No. of Issuers/Issues	155 / 187	1719 / 3928
% of Top 10 Issuers	15.61	11.30

*securities portfolio only, excludes cash

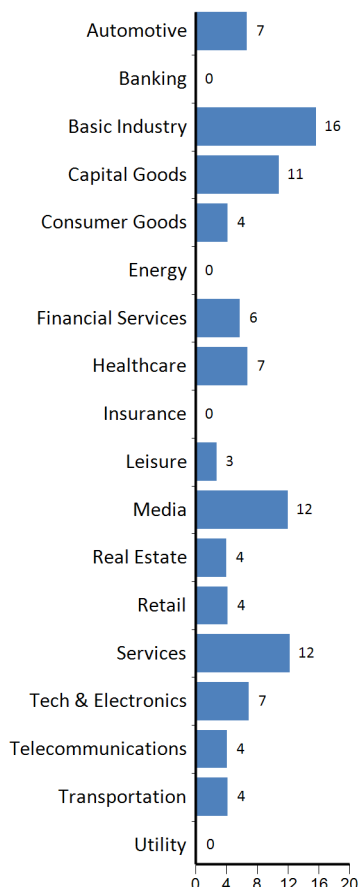
Maturity (%)



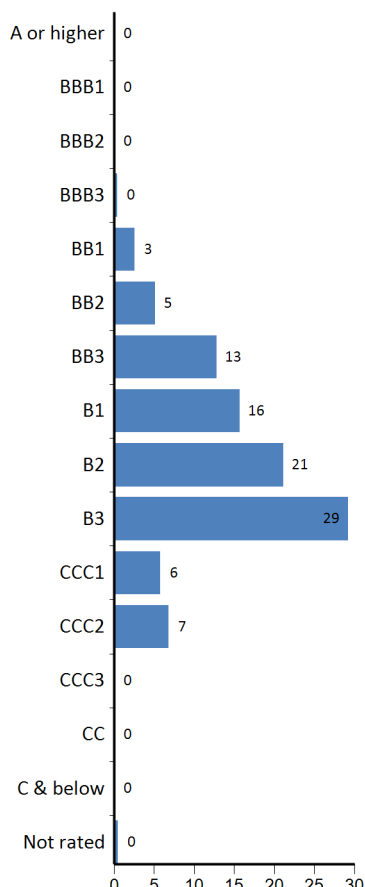
Modified Duration to Worst (%)



Sector (%)



Average Rating (%)



■ Fund ■ Index

Contact

info@skyhcm.com

+49 69 75938622

+1 203 769 8800

Find all fund documents at:

www.skyharborglobalfunds.com

About SKY Harbor Capital Management

SKY Harbor Capital Management, LLC ("SKY Harbor"), an independent investment manager registered with the US Securities and Exchange Commission, is the appointed Investment Manager for SKY Harbor Global Funds. SKY Harbor offers a range of high yield and leveraged loan strategies for global institutional investors and private wealth advisors. Senior leadership and co-founders Hannah Strasser and Anne Yobage have managed high yield investments as a team through multiple market cycles for nearly 30 years. SKY Harbor's process is grounded in fundamental analysis and ESG integration, then refined by quantitative and technical assessment, to identify income potential while effectively managing risk. SKY Harbor is based in Greenwich, CT USA. Visit www.skyhcm.com.

A Message to Investors

This performance summary ("Factsheet") of SKY Harbor Global Funds (the "Fund") is provided by SKY Harbor Capital Management GmbH, the Fund's authorized principal distributor, and is designed to be read by institutional investors for marketing and summary information purposes only. This material is not intended as an offer or solicitation for the purchase or sale of any security. This Factsheet does not consider the circumstances, investment objectives, risk tolerances, tax or legal situation of any investor. Investing in high yield below-investment-grade corporate debt securities entails risk of loss and may be unsuitable to your circumstances. Past performance is not indicative of future results. The information herein is subject to change without notice and is derived or obtained from sources believed to be reliable, but SKY Harbor Capital Management GmbH or its affiliates and their respective directors, officers, employees, and agents (collectively SKY Harbor) do not warrant its completeness or accuracy except with respect to any disclosures relative to SKY Harbor. Performance data herein is net of fees and calculated from published NAVs. Net performance is calculated as of the last NAV date of the applicable reporting period and results reflect the reinvestment of dividends and interest. Fund characteristics including top 10 holdings by issuer weight are provided solely for the purposes of this Factsheet and not to be viewed as a recommendation whether direct or implied to buy, sell, or hold any of the referenced securities, issuers, or sectors. This document does not replace, revise or reinterpret the information, risk factors, and other important disclosures set forth in the Fund Prospectus, KIID, Annual and Semi-annual reports, which along with other disclosures (collectively, "Offering Materials") are available without charge from the following sources: (i) SKY Harbor Capital Management GmbH, located at: 4 an der Welle, 60322 Frankfurt, Germany; (ii) JPMorgan Bank Luxembourg S.A., the Fund's transfer agent, fund accountant and custodian located at: 6, route de Trèves, L-2633 Senningerberg, Luxembourg; (iii) online at the Fund's website at www.skyharborglobalfunds.com; or (iv) from the Swiss Representative (see below). It is every investor's responsibility to read with care the Fund Offering Materials before investing. SKY Harbor Global Funds is established and registered for public distribution in Luxembourg. The Fund is also registered for public distribution in a number of jurisdictions in Europe. Refer to Fund's website for a more complete listing of registered jurisdictions. The Fund may not be sold in jurisdictions where the Fund is not registered unless an applicable exemption from registration exists such as under a private placement regime. The Fund is not registered under the US Securities Act of 1933 nor the US Investment Company Act of 1940 and may not be offered or sold in the United States (or to a US person) absent registration or an applicable exemption from the registration requirements. SKY Harbor disclaims any liability or responsibility for any transaction in the Fund's shares by investors or sub-distributors not in compliance with law. Further information is available on request from your SKY Harbor relationship contact or by email at skyharborgmbh@skyhcm.com.

This document constitutes marketing communications concerning SKY Harbor Global Funds, a Luxembourg UCITS authorized in accordance with Article 5 of Directive 2009/65/EC, as amended. Lemanik Asset Management S.A. (the "manco") is the appointed management company of the Fund and is responsible on a day-to-day basis under the supervision of the Board of Directors, for providing administration, marketing, distribution, investment management and advisory services in respect of all the Sub-Funds and has delegated part or all of such functions to third parties including but not limited to SKY Harbor Capital Management, LLC as investment manager and SKY Harbor Capital Management GmbH as Principal Distributor. The manco has the right to terminate arrangements made for the marketing of the shares of this UCITS in accordance with Article 93 of Directive 2009/65/EC, as amended.

Social responsible investing does not guarantee optimal asset allocation and may not necessarily comport with an investor's subjective, moral or ethical standards and aspirations.

Investor rights to file complaints regarding the operation of the Fund is set forth in the Fund's prospectus, which is available free of charge in English and French at www.skyharborglobalfunds.com, where the Fund's Key Investor Information Documents may also be accessed free of charge in English, French, German (including Swiss German), Spanish, Italian, Portuguese, Swedish, Danish, Norwegian, and Dutch.

The ICE BofA Index data referenced herein is the property of ICE Data Indices, LLC ("ICE BofA") and/or its licensors and has been licensed for use by SKY Harbor. ICE BofA PERMITS USE OF THE ICE BofA INDICES AND RELATED DATA ON AN "AS IS" BASIS, MAKES NO WARRANTIES REGARDING SAME, DOES NOT GUARANTEE THE SUITABILITY, QUALITY, ACCURACY, TIMELINESS, AND/OR COMPLETENESS OF THE ICE BofA INDICES OR ANY DATA INCLUDED IN, RELATED TO, OR DERIVED THEREFROM, ASSUMES NO LIABILITY IN CONNECTION WITH THE USE OF THE FOREGOING, AND DOES NOT SPONSOR, ENDORSE, OR RECOMMEND SKY HARBOR OR ANY OF ITS PRODUCTS OR SERVICES.

The LuxFLAG ESG Label is valid for the period from April 1, 2021 to March 31, 2022. Investors must not rely on LuxFLAG or the LuxFLAG Label with regard to investor protection issues and LuxFLAG cannot incur any liability related to financial performance or default of the fund.

Supplementary Information for Swiss Investors

This document is designed primarily for institutional investors for marketing, advertising, and information purposes only and is not intended as an offer or solicitation for the purchase or sale of any security. The foregoing additional disclaimers shall also apply to Swiss investors. The state of the origin of the fund is Luxembourg. In Switzerland, the Swiss Representative is ACOLIN Fund Services AG, Leutschenbachstrasse 50, CH-8050 Zurich, whilst the paying agent is Banque Cantonale Vaudoise, Place Saint-François 14, 1001 Lausanne, Switzerland. The Prospectus, the Key Investor Information Documents, the articles of incorporation as well as the annual and semi-annual reports may be obtained free of charge from the Swiss Representative. Past performance is no indication of current or future performance. The performance data do not take account of the commissions and costs incurred on the issue and redemption of units.

Supplementary Information for UK Investors

This communication is only directed at persons in the UK reasonably believed to be persons who (1) have professional experience in matters relating to investments, falling within Article 19(5) of the UK Financial Services and Markets Act 2000 (Financial Promotion) Order 2005 (as amended) (the "Financial Promotion Order") or (2) are persons falling within Article 49(2)(a) to (d) ("high net worth companies, unincorporated associations, etc.") of the Financial Promotion Order or (3) are persons to whom such a document may otherwise lawfully be communicated (all such persons together being referred to as "relevant persons"). This communication must not be acted on or relied on by persons who are not relevant persons. Any investment or investment activity to which this material relates is available only to relevant persons or will be engaged in only with relevant persons.